
The Sprout

Montana Seed Growers Association

Spring 2026

Spring Update

Spring is right around the corner even though it seems to be the winter that never showed. Regardless spring planting will be starting soon. MSGA wants to remind everyone to send in your 2025 seed for testing. All seed that passed certification must be sent into our office for testing at the Montana State Seed Laboratory. You must get a purity, noxious, and germination test done on your samples. Also remember that all lentils and chickpeas need to have an Aschochyta disease test done on each lot before certification will be granted. Please also send in carryover seed for a new germination. Germinations are only good for 12 months in state and 6 months for seed that is to be sold across state lines. All seed must be sold on a MT bulk certificate or on a certification tag printed by our office.

Perennial Rollovers/Renewals

2026 Perennial rollovers can be done at any time. To roll over your perennial fields, log into the MSGA seed tracking database, under the application tab, you will see "grass application to bring forward". From that tab, you can specify what you would like to happen to your fields for the 2026 season. If you have questions or run into issues please give Rebecca a call at the office at (406) 994-5121



Certification Fees

The following fees will still apply to all applications submitted online.

Annual Processing Fee/Application Fee:	\$30.00/application
Acreage Fee- (will be refunded on acres canceled before field inspection)	
All Crops:	\$2.50/acre
Except for Canola and Field Beans:	\$6.00/acre
Industrial Hemp:	\$6.00/acre

Upcoming Events

- March 18 - Agriculture Development Council Meeting
- March 24 - Montana Wheat & Barley Committee Spring Board Meeting
- April 1 - MSGA Application & Database Training and Q &A via Zoom
- April 7 - MT Dept. of Agriculture Pesticide Disposal Event – Kalispell
- April 8 - MT Dept. of Agriculture Pesticide Disposal Event – Plains
- April 9 - MT Dept. of Agriculture Pesticide Disposal Event – Missoula
- April 15 - MSGA Production Fees Due
- May 25- MSGA Pulses, Perennials & Other Flowering Crops Applications Due
- June 4 & 5 - Montana Grain Growers Association Golf Tournament
- June 15 - MSGA All Crop Applications Due
- July 7 - MT Dept. of Agriculture Pesticide Disposal Event – Polson
- July 8 - MT Dept. of Agriculture Pesticide Disposal Event – Hamilton
- July 9 - MT Dept. of Agriculture Pesticide Disposal Event – Butte
- July 21-24 - Montana Wheat & Barley Committee - Advanced Class in Malt Production

2026 MSU Summer Field Days

- June 18 - 2:00 p.m. - Northern Agricultural Research Center - Havre
- June 30 - 9:00 a.m. - Southern Agricultural Research Center - Huntley
- July 7 - 8:30 a.m. - Western Triangle Agricultural Research Center - Conrad
- July 8 - 8:30 a.m. - Central Agricultural Research Center - Moccasin
- July 09 - 9:00 a.m. - Northwestern Agricultural Research Center - Creston
- July 15 - 8:00 a.m. - Eastern Agricultural Research Center - Sidney
- July 16 - 8:00 a.m. - Post Farm - Bozeman
- July 30- 4:30 p.m. - Western Agricultural Research Center - Corvallis
- TBD - 5:00 p.m. - BART & Horticulture Farm - Bozeman

MSGA Office Holidays

- May 25, 2026 - Memorial Day
 - July 3, 2026 - Independence Day
 - September 7, 2026 - Labor Day
 - November 11, 2026 - Veteran's Day
-

Making Every Acre Count This Season



Montana growers are staring down another year where moisture may be tight and every decision matters. That's exactly why starting with certified, pedigreed seed can make a real difference when conditions get tough.

Stronger starts in dry years

Certified seed delivers known vigor and genetic purity, helping plants get up and going even when early moisture is limited.

More uniform, predictable stands

With verified varietal identity and clean seed lots, you get more consistent emergence and a crop that's easier to manage all season.

Better odds of holding yield & quality

Healthier, more uniform plants help protect yield potential & reduce the risk of dockage or quality surprises at delivery.

Cleaner fields over time

Certified seed reduces volunteer issues and weed contamination, helping you maintain field quality without extra headaches.

Support for stewardship & breeding

Choosing certified seed keeps you in compliance with variety protection rules & supports the breeding programs that bring Montana growers better genetics year after year.

Every seed has to work harder in a drought

When conditions are stacked against us, starting with high-quality, pedigreed seed helps make the most of every acre.

If you'd like to talk through certified seed options for your farm this season, we're here. Give us a call, stop by, or send us a note anytime.

Production Fees

Please remember that production fees must be paid on all seed that was field inspected. We send out the first notice for production fees at the end of November.

Production can be calculated without cleaning seed. Simply deduct 10% for the clean-out amount and pay on that quantity.

For prices, please refer to the MSGA Seed Certification Standards handbook or online at www.mtseedgrowers.org.

Production fees must be paid no later than April 15th, 2026. Contractors are responsible for paying production fees to MSGA. We do not individually invoice growers.

Late Fee Structure

After May 25th: \$50.00 late fee

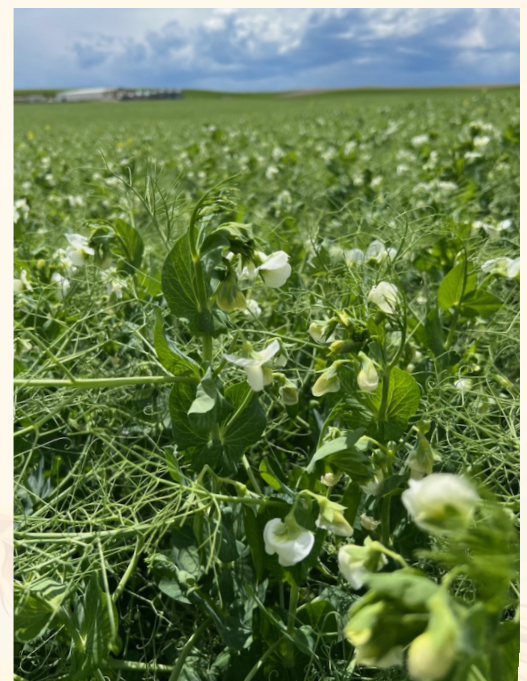
After June 15th: \$100.00 late fee of pulse crops & perennials

June 15th: All applications are due

After June 15th: \$50.00 late fee on small grains

After July 1st: \$100.00 late fee on small grains

After July 15th: \$200.00 late fee on all applications



MSU Foundation Seed Program - 2026 Variety Release Update

The 2026 Variety Release Meeting was held on Wednesday, February 4, 2026. The following varieties have been released:

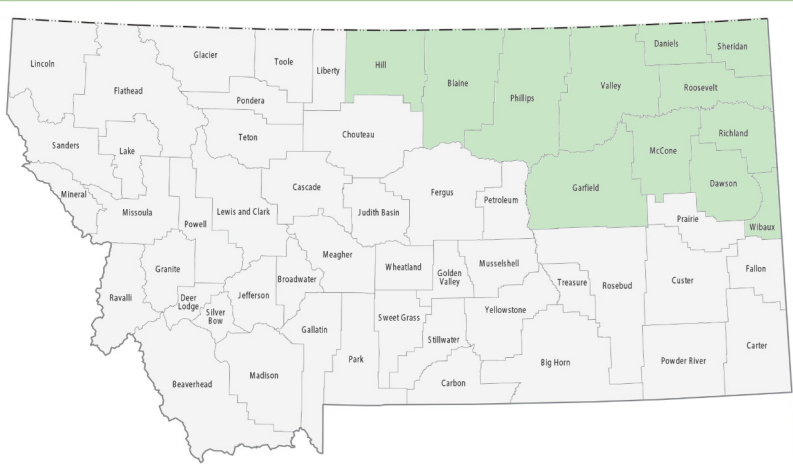
- MTD19011 Solid Stem Durum, public release, PVP Title IV Pending, Foundation seed available Spring 2027.
 - MTD19241 Hollow Stem Durum, public release, PVP Title IV Pending, Foundation seed available Spring 2027.
 - MT 21074 Spring Wheat, public release, PVP Title IV Pending, Foundation seed available Spring 2027.
 - MT21487 Clearfield Spring Wheat, private release, PVP Title IV Pending, Foundation seed available Spring 2027.
 - MT18H02702 (MT Kidd), Hullless Waxy Barley, public release, PVP Title IV Pending, Foundation seed available Spring 2026.
-

MONTANA SEED GROWERS ASSOCIATION

JOIN OUR TEAM

WE ARE HIRING

SEASONAL FIELD INSPECTORS



Position Responsibilities

- Conduct field inspections for seed certification
- Travel independently throughout the assigned counties
- Communicate with growers to schedule and conduct inspections
- Accurately record inspection data using a tablet

Desired Qualifications

- Knowledge of Montana seed crops or general agricultural experience
- Strong foundation in crop, weed, and disease identification
- Ability to walk long hours in summer heat and uneven field conditions
- Comfort communicating with customers by phone, including cold calling
- Ability to use a tablet or similar device for field data entry
- Flexible schedule to accommodate last-minute inspections
- Ability to work independently and manage one's own schedule

IF YOU ARE INTERESTED PLEASE CONTACT:

REBECCA PAPKE
CERTIFICATION MANAGER, MSGA
REBECCA.PAPKE@MONTANA.EDU
406-994-5121



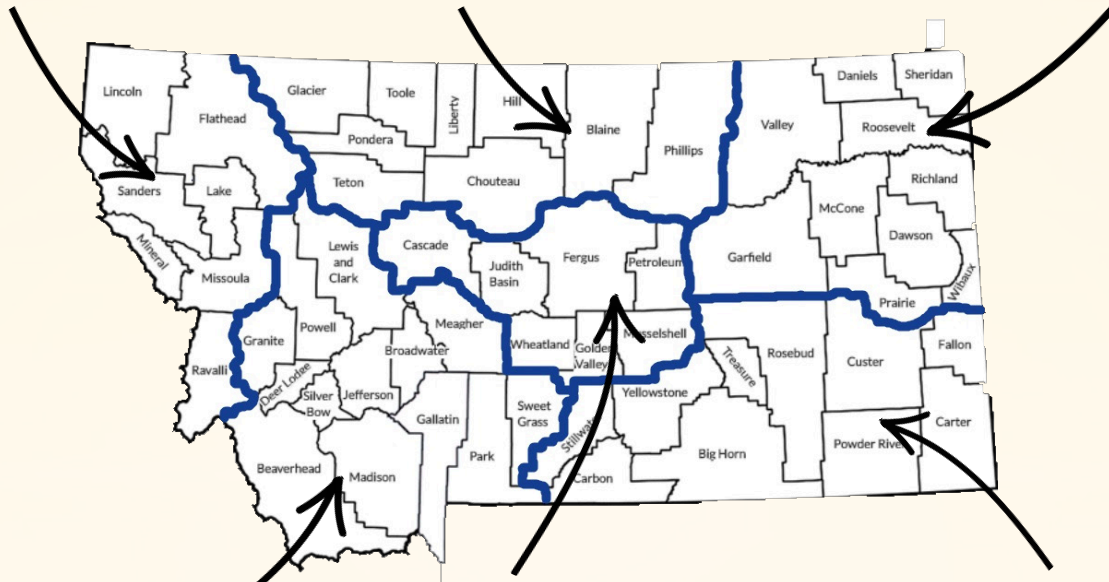
WWW.MTSEEDGROWERS.ORG/

Current Board of Directors

Tim Lake
District 1 Director

Terry Peters
District 5 Director

Chad Forest
District 6 Director/President



Bob Hofman
District 2 Director

Katie Hatlelid
District 4 Director

Phil Davey
District 3 Director/Vice President

Dr. Ryan Thum
Ex Officio, MSGA Board of Directors

A Thank You to Red Lovec

MSGA would like to extend a sincere thank you to Red Lovec for his hard work and dedication to field inspecting for more than ten years. We would like to congratulate him on his retirement and wish him the best of luck on his next adventure.

To: Heather and Rebecca, MSGA
My 20/20 eye sight has long been gone
My hearing is best from dusk to dawn
As the world turns I get a little older each day.
So it is time that I quit this job and go play.
I am pushing 82, and I have thought this though.
I have enjoyed inspecting crops and working with you.
My neighbors don't think I should climb ladders or trees
And stay off the roof please. As I inspect my last field,
with bike or drone, I might stop to fish on my way home.
- Red Lovec

Membership Forms

We sent out Membership forms requesting updated contact information and committee interest. The final notice has been sent out so if you need a new copy, please email Rebecca or Kenzie. If you have not completed and returned your Membership Form it is important you do so before the beginning of inspection season. We will need updated contact information for our inspectors and to provide you with updates on your fields.



Bulk Retail & Cleaning Facilities

Cleaning and Handling facilities will receive blank Renewal forms this year. This is so we can update contact information for active cleaning and handling facilities. Updated and accurate contact information is important because it will be included in the 2026 Certified Seed Directory.

Companies no longer working with certified seed, can opt to be removed from the list and will no longer owe fees to MSGA or be listed in the MSGA Certified Seed Directory.

Cleaning & Conditioning Forms

We have updated our Cleaning & Conditioning forms that are submitted with lab samples. Cleaning & Conditioning forms must be submitted with every sample and filled out completely. This ensures MSGA and the lab have the correct information and can process your samples in a timely manner. You can find the new forms on our website under the "Resources" tab on our website. We can also email you a copy upon request.

Most of the changes were formatting and clarification changes. The only new test listed is KOH which is required for all white wheat samples.

As a reminder when the "Rush" option is selected, all requested tests will be prioritized as Rush samples by the lab. If multiple tests are requested one test cannot be a Rush while the others are not. This has always been the how the lab processes samples, so we have updated the form to better reflect that.

A Look at Certified Seed in the Past

Photograph Title: Exhibit at Idaho-Montana Seed Growers Association.

Date: 1894

Abstract: Joint exhibit Montana- Idaho Growers Association.

Montana State University Library Archives and Special Collections Montana State University Historical Photos.



Photograph Title: Montana Pure Seed exhibit at the County Fair.

Date: 1924

Abstract: A black and white photo of the Montana pure seed exhibit at the county fair. Montana State University Library Archives and Special Collections Montana State University Historical Photos.

Photograph Title: Advertisement for registered and certified seed.

Date: 1894

Abstract: Exhibit showing registered and certified seed from the Montana seed Growers Association, Montana Extension Service and Experiment Stations.

Montana State University Library Archives and Special Collections Montana State University Historical Photos.



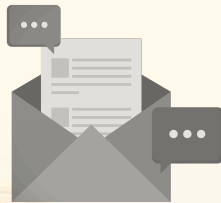


MSGA Staff

Executive Director — Heather Unverzagt
hunverzagt@montana.edu
(406) 994-7372

Certification Manager — Rebecca Papke
Rebecca.papke@montana.edu
(406) 994-5121

Research Assistant — Kenzie Crew
mckenzie.crew@montana.edu
(406) 994-3516



Contact MSGA

Physical/Mailing Address

Montana Seed Growers Association
Montana State University
Bozeman MSU
Marsh Labs
P.O. Box 173146
Bozeman, Montana 59717-3146

Shipping Address for UPS & FedEx

Montana Seed Growers Association
1911 West Lincoln Street
Marsh Labs; Modular 1
Bozeman, MT 59718
